

# A TES Bolometer for THz FT-Spectroscopy

M. Kehrt, J. Beyer, C. Monte, J. Hollandt

Physikalisch-Technische Bundesanstalt, Abbestraße 2-12, Berlin, Germany

Mathias.Kehrt@PTB.de

## Abstract:

A Transition Edge Sensor (TES) composite bolometer for Fourier Transform (FT) spectroscopy was designed, built and characterized. The design is based on a superconducting thermistor with SQUID readout, SiN membrane technology and a thin film metal mesh absorber which is optimized for the spectral range from 0.1 THz to 3 THz. A noise equivalent power (NEP) of  $3.8 \cdot 10^{-13} \text{ W/Hz}^{0.5}$  was achieved with a linear dynamic range of at least four orders of magnitude.

**Key words:** TES, bolometer, FTS, THz, SQUID

## Introduction and Background

The Physikalisch-Technische Bundesanstalt (PTB) developed a liquid helium cooled composite bolometer that is based on a superconducting thermistor and a microstructured metal film absorber. The bolometer is designed to replace conventional semiconductor-based bolometers in FT spectrometers operating in the frequency range from 0.1 THz to 3 THz.

Special emphasis in the design was given on a high and spectrally uniform absorption in this spectral range as well as on a highly linear response in order to avoid artifacts in the data processing of FT spectroscopy. The composite design allows a separate optimization of all relevant components, especially of the absorber and the thermistor.

## Absorber and Thermistor Design

One approach realizing the desired spectrally flat absorption is matching the sheet resistance of the absorber to half the vacuum impedance. By using a continuous metal layer with a thickness smaller than the skin depth and a sheet resistance of  $R_{\square} = 188 \Omega$ , a theoretical maximum absorption of 0.5 can be obtained [1].

A sufficiently thin continuous metal layer cannot be fabricated in high quality using materials accessible in standard thin film deposition. Therefore, the absorbers here are based on micro-structured metal meshes to match the vacuum impedance. In order to achieve a spectrally flat absorption the structural dimensions are much smaller than the relevant wavelengths. Two different designs were investigated systematically. One design consists of a simple mesh, the other design has

additional square loops insight each mesh as shown in Fig. 1.

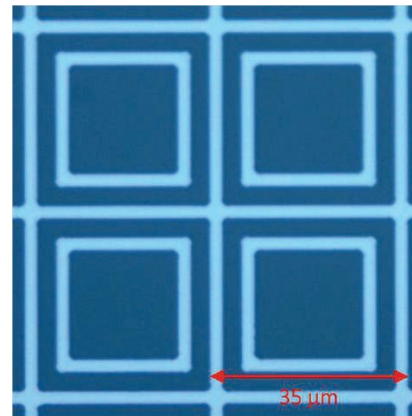


Fig. 1. Microscopic image of a microstructured metal mesh absorber. Here the design with square loops insight each mesh is shown.

Two structures, one of each design, were identified as optimum absorbers. Both structures have a strip width of  $3 \mu\text{m}$ . The structure without loops in the grid has a pitch of  $10 \mu\text{m}$ , the structure with loops a pitch of  $35 \mu\text{m}$ . The absorbers were lithographically fabricated on  $1 \mu\text{m}$  thin SiN membranes. The metal has a thickness of about  $100 \text{ nm}$  with a corresponding sheet resistance of approx.  $20 \Omega$ .

The absorption  $\alpha$  determined for both variants is spectrally flat and near its theoretical maximum of 0.5 for this approach as illustrated in Fig. 2. The results were obtained by reflectance  $\rho$  and transmittance  $\tau$  measurements by

$$\alpha = 1 - \rho - \tau$$

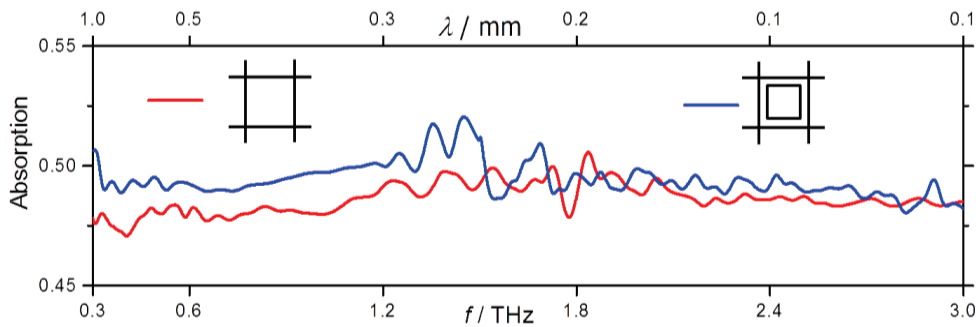


Fig. 2. Spectrally flat absorption of the two selected absorber designs. Both designs are close to the theoretical absorption limit of 0.5.

A further requirement of the bolometer is a high dynamic range in combination with a highly linear response. To achieve this, the thermistor is realized as a transition edge sensor (TES) which utilizes the resistive transition of a superconductor structure [2]. Our TES thermistors are fabricated from bilayers of a superconducting (niobium) and a normal conducting (aluminium) metal. The critical temperature of the bilayer is reduced compared to a single layer of niobium. This ensures a superconducting operation of the leads (niobium) while the TES is in its transition range (Fig. 3.).

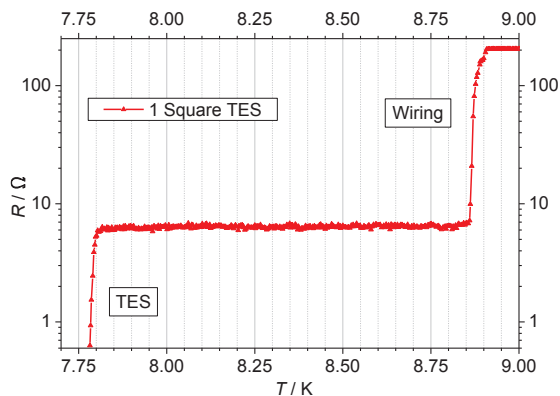


Fig. 3. Resistive transition of the TES and, at higher temperature, of its leads.

The TES shows a superconducting transition at  $T_c \approx 7.8$  K with a width of approx. 20 mK. Operating the TES in strong voltage biased condition a negative electrothermal feedback (nETF) extends the dynamic range [3] by ensuring that a constant sum of electrical heating power and incident radiative power stabilizes the TES at a fixed temperature inside the superconducting transition. The heating current which is measured using a Superconducting Quantum Interference Device (SQUID) current sensor is directly related to the incident radiation.

Several composite bolometers consisting of TES thermistors and both types of absorber structures were fabricated in a multilayer lithographic process on SiN membranes. On

the left of Fig. 4 a bolometer element with a TES in the center is shown. The thermistor in the center is surrounded by the absorber with a physical dimension of 3.3 mm in square. The mounted bolometer with the SQUID readout and wiring is shown in the middle of Fig. 4.

### Characterization

The complete detector was built up in a liquid helium cooled cryostat. The bolometer is shielded from the warmer surrounding inside of the cryostat by a gold plated housing. To reduce reflected FIR radiation the inner side of the housing is coated by grained SiC. The THz radiation to be detected passes a wedged diamond window and one of several cooled filters in a filter wheel and is concentrated by a Winston cone onto the bolometer (Fig. 4, right).

For the electrical characterization the bolometer was operated in this environment without a radiant load by replacing one of the filters by a copper plate. The dark signal was recorded by a spectrum analyzer. The measured noise spectral density divided by the responsivity [3] leads to a noise equivalent power (NEP) of  $3.8 \cdot 10^{-13}$  W/Hz<sup>0.5</sup> for typical operating conditions.

Additionally, the linear response range was determined with tunable THz radiation at the Metrology Light Source (MLS), the electron storage ring of PTB [4]. To investigate a power range over several orders of magnitude two operation modes of the MLS were used: normal operating mode providing incoherent THz radiation as well as low- $\alpha$  mode providing coherent THz radiation up to the mW range. In normal mode of operation four different ring currents were used. In low- $\alpha$  mode the MLS was operated at one ring current. For a finer attenuation of the radiant power two wire grid polarizers at different angle settings were utilized. In low- $\alpha$  mode the bolometer was compared with a calibrated broadband THz detector [5]. Here the bolometer shows a linear response up to 330  $\mu$ W as shown in Fig. 5 in lightblue squares.

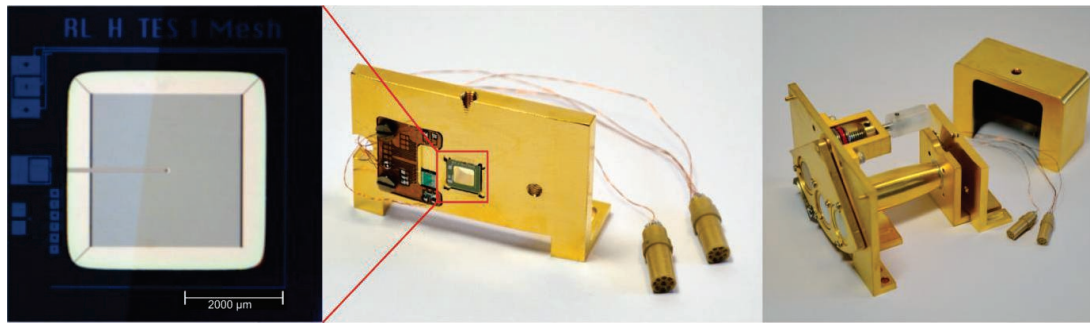


Fig. 4. The TES-Bolometer, its mounting and its final setup. Left: Bolometer element with a TES in the centre, surrounded by the absorber mesh on a SiN membrane. Middle: Mounted bolometer with SQUID and wiring. Right: Assembly of filter wheel, Winston Cone, bolometer mount and radiation shield.

In normal mode of operation the calibrated detector was not sensitive enough for a comparison. But here the radiant power is known to be strictly proportional to the ring current and the TES bolometer shows a linear response according to the calculated attenuation due to the angle settings of the polarizers. To determine the missing proportionality factor the results of the highest ring current of 140 mA were extrapolated and scaled to the results obtained in low- $\alpha$  mode.

The compiled consistent results of all measurements at both operating modes of the MLS are shown in Fig. 5. The TES bolometer provides a linear response over a range of at least four orders of magnitude.

## References

- [1] W. Woltersdorff, "Über die optischen Konstanten dünner Metallschichten im langwelligen Ultrarot", *Z. Phys.*, **91**, 230–252, 1934.
- [2] P. L. Richards, "Bolometers for infrared and millimeter waves", *Appl. Phys.*, **76**, 1–24, 1994
- [3] K. Irwin and G. Hilton. "Transition-edge sensors". In C. Enss, editor, *Cryogenic Particle Detection*, volume 99 of *Top. Appl. Phys.*, pages 63–150. Springer Berlin Heidelberg, 2005
- [4] J. Feikes, M. von Hartrott, M. Ries, P. Schmidt, G. Wüstefeld, A. Hoehl, R. Klein, R. Müller, and G. Ulm, "Metrology Light Source: The first electron storage ring optimized for generating coherent THz radiation," *Phys. Rev. ST Accel. Beams*, **14**, 030705, 2011
- [5] R. Müller, W. Bohmeyer, M. Kehrt, K. Lange, C. Monte, and A. Steiger, "Novel detectors for traceable THz power measurements," *J. Infrared Millim. Terahertz Waves*, **35**, 659–670, 2014

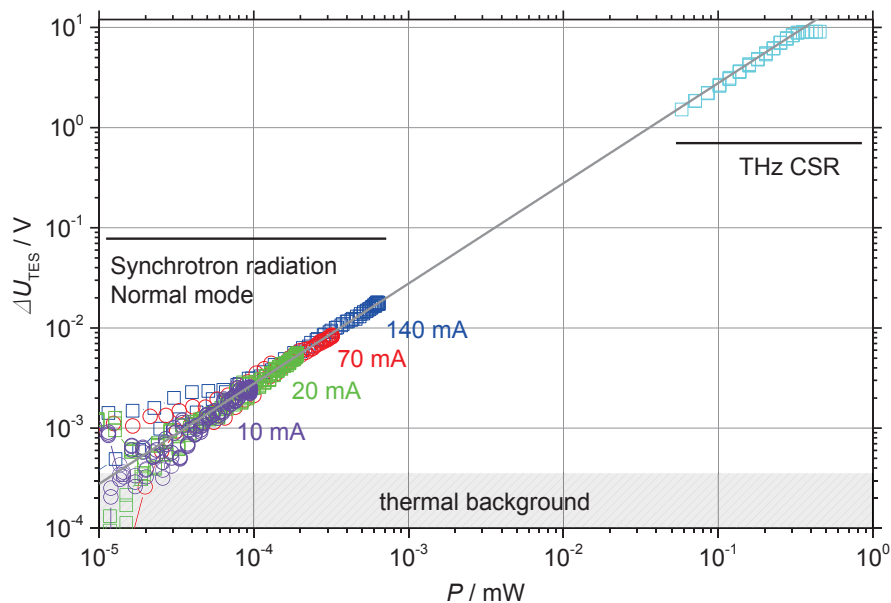


Fig. 5. The linear response range of the TES bolometer was determined to be four orders of magnitude by measurements at an electron storage ring (Metrology Light Source of PTB). Two modes of operation of the storage ring (normal mode and THz coherent synchrotron radiation CSR) with different ring currents were used to systematically vary the radiant power on the bolometer.